

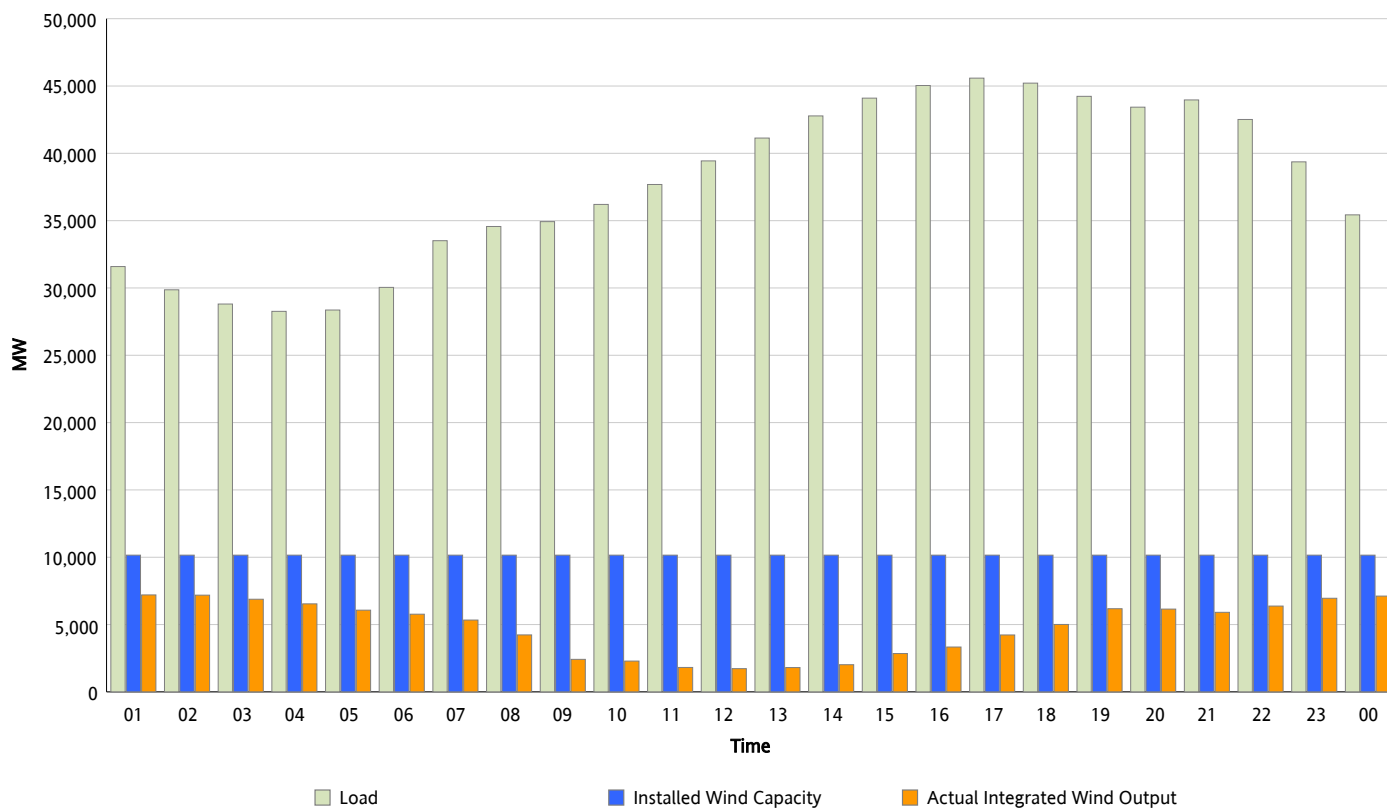


## ERCOT Grid Operations

### Wind Integration Report : 04/16/2013

Peak Load	45,586 MW
Load Peak Hour (HE)	17
Wind Over Peak	4,228 MW
Wind Record 02/09/13	9,481 MW
Max Wind Value*	7,295 MW
Wind Peak Time	00:06
Wind Integration %	22.44 %

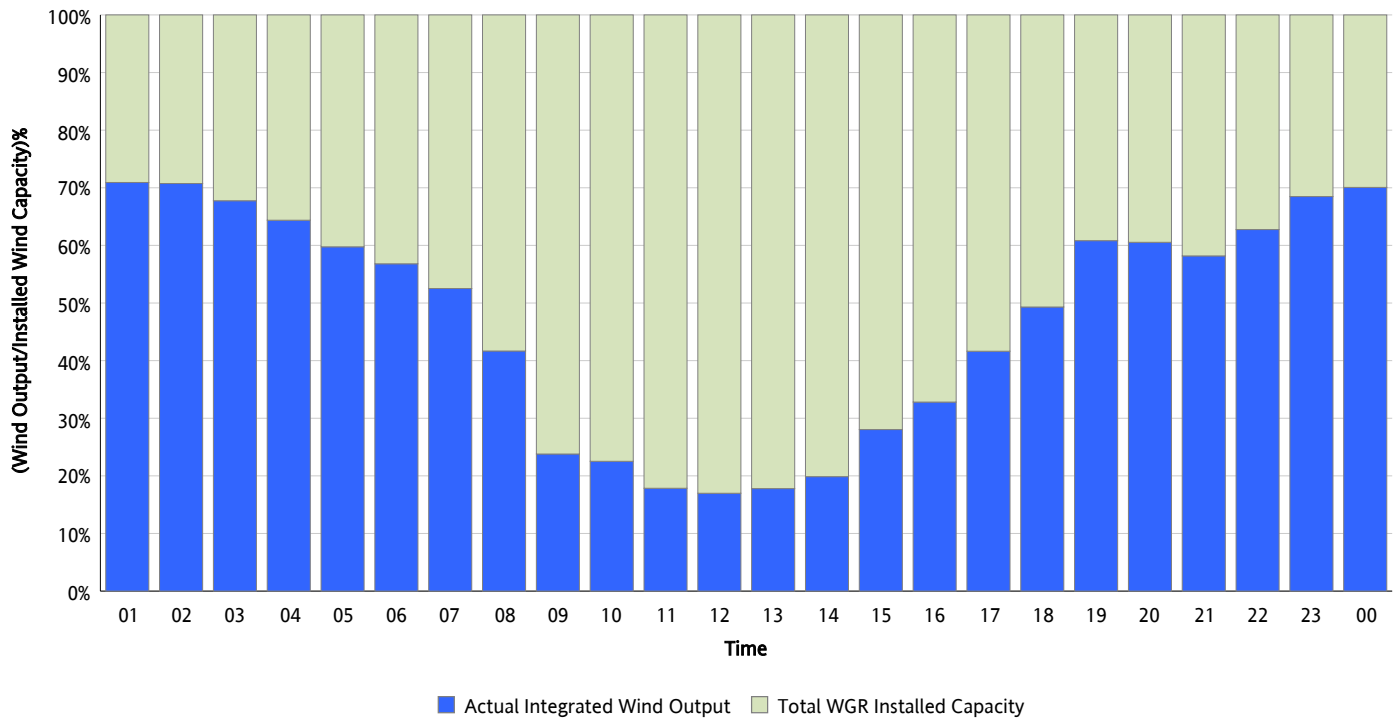
**Hourly Average Actual Load vs. Actual Wind Output**  
**04/16/2013**



\* Wind Record and Wind Max represent instantaneous values and the rest of the values are integrated over the hour

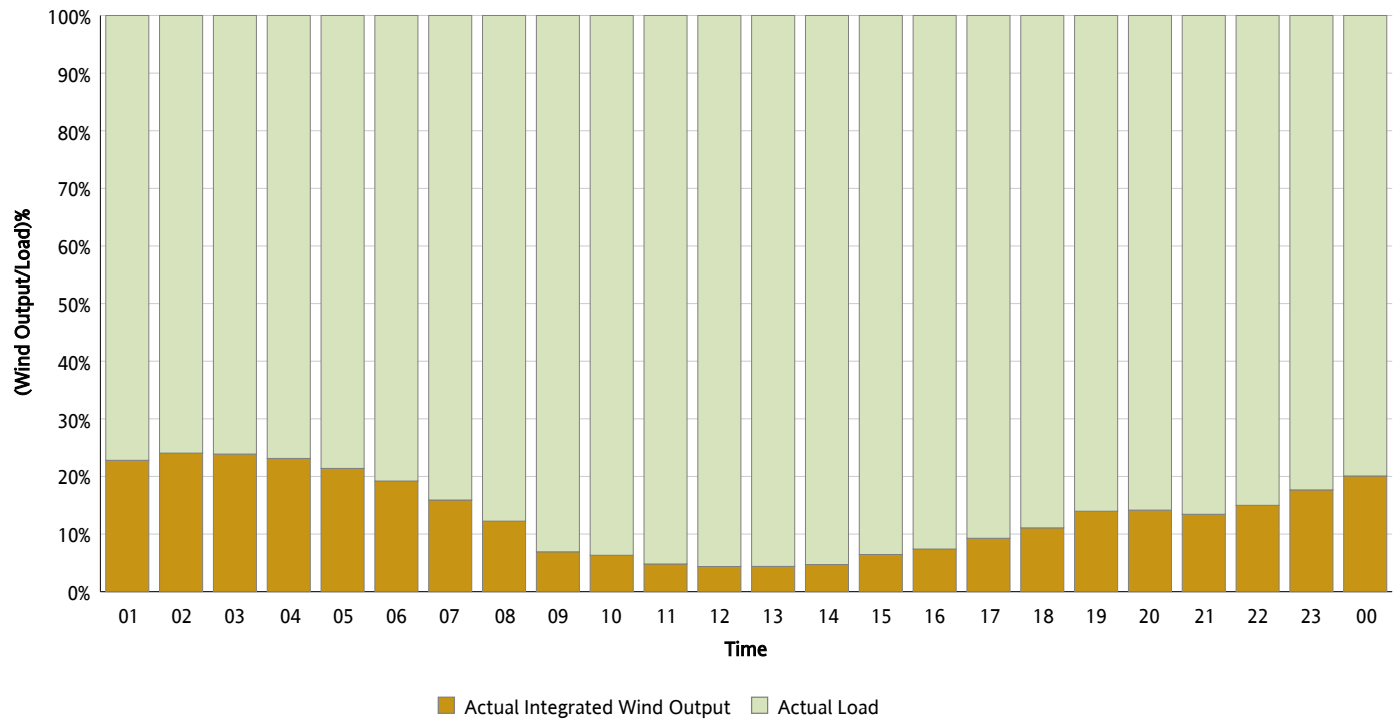
## Actual Wind Output as a Percentage of the Total Installed Wind Capacity

04/16/2013



## Actual Wind Output as a Percentage of the ERCOT Load

04/16/2013



## ERCOT Load vs. Actual Wind Output

04/09/2013 - 04/16/2013

